



NFCL-R26xUE14 Single Color Outdoor Lamp Cluster

Electro/Optical Characteristics If=20mA Ta=25°C

Part Number	Emitting Colors	Peak Wavelength	Forward Voltage Vf		Luminous Intensity Iv		Viewing Angle
			typical	max.	min.	typical	2 θ 1/2
NFCL-S26xUE14	AlGaInP Ultra Orange	632	14.00	16.10		800.0*14	45
NFCL-S26xUE14-TL	AlGaInP Ultra Orange	632	14.00	16.10		1500.0*14	45
Units		nm	V		mcd		degree

Maximum Ratings Ta=25°C (Derate above 25°C)

Characteristic	Condition	Symbol	Ultra Orange		Units
Pulse Forward Current	0.1 duty cycle 0.1ms Pulse width	I _{FP}	150		mA
DC Forward Current		I _F	30		mA
Reverse Current	V _r =5V	I _R	20		μA
Power Dissipature		P _D	910		mW
Operating Temperature		T _{OPR}	-40 to +80		°C
Storage Temperature		T _{TSG}	-40 to +85		°C
Lead soldering temperature	1.60mm from body maximum 3 seconds		260		°C

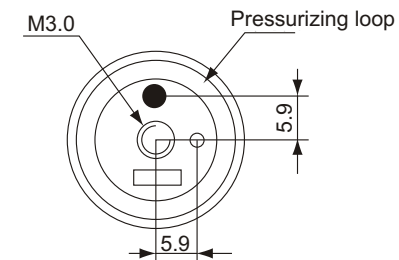
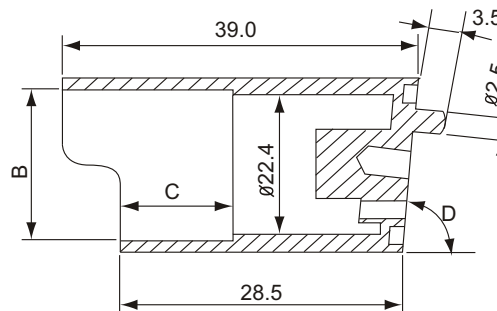
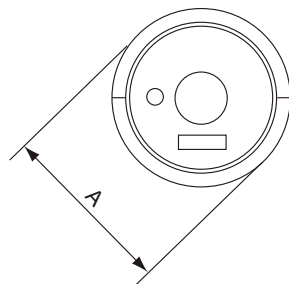


NFCL-R26xUE14 Single Color Outdoor Lamp Cluster

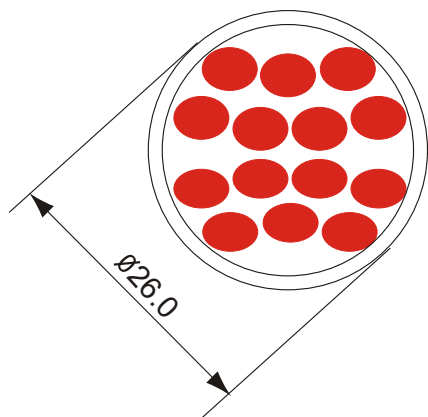
PACKAGE DIMENSION

NFCL-R26x Series

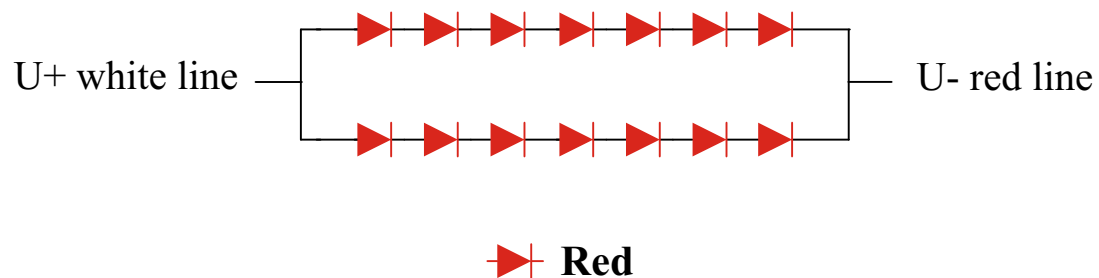
SPEC.	A	B	C	D
R26A	26 ^{+0.0} _{-0.1}	23.8	7.5	80°
R26B	26 ^{+0.0} _{-0.1}	23.8	9.5	80°
R26C	26 ^{+0.0} _{-0.1}	23.8	14.5	80°



INTERNAL CIRCUIT DIAGRAM



Common Anode



Tolerance $\pm 0.25\text{mm}$ unless stated