



NFCL-R26xUY10 Single Color Outdoor Lamp Cluster

**Electro/Optical Characteristics If=20mA Ta=25°C**

| Part Number        | Emitting Colors      | Peak Wavelength | Forward Voltage Vf |       | Luminous Intensity Iv |          | Viewing Angle |
|--------------------|----------------------|-----------------|--------------------|-------|-----------------------|----------|---------------|
|                    |                      |                 | typical            | max.  | min.                  | typical  | 2 θ 1/2       |
| NFCL-R26xUY10-546C | AlGaInP Ultra Yellow | 590             | 10.50              | 12.50 |                       | 350.0*10 | 110           |
|                    |                      |                 |                    |       |                       |          |               |
|                    |                      |                 |                    |       |                       |          |               |
|                    |                      |                 |                    |       |                       |          |               |
|                    |                      |                 |                    |       |                       |          |               |
|                    |                      |                 |                    |       |                       |          |               |
| Units              |                      | nm              | V                  |       | mcd                   |          | degree        |

**Maximum Ratings Ta=25°C (Derate above 25°C)**

| Characteristic             | Condition                          | Symbol           | Ultra Yellow |  | Units |
|----------------------------|------------------------------------|------------------|--------------|--|-------|
| Pulse Forward Current      | 0.1 duty cycle 0.1ms Pulse width   | I <sub>FP</sub>  | 100          |  | mA    |
| DC Forward Current         |                                    | I <sub>F</sub>   | 30           |  | mA    |
| Reverse Current            | V <sub>r</sub> =5V                 | I <sub>R</sub>   | 10           |  | μA    |
| Power Dissipature          |                                    | P <sub>D</sub>   | 65*10        |  | mW    |
| Operating Temperature      |                                    | T <sub>OPR</sub> | -40 to +80   |  | °C    |
| Storage Temperature        |                                    | T <sub>TSG</sub> | -40 to +85   |  | °C    |
| Lead soldering temperature | 1.60mm from body maximum 3 seconds |                  | 260          |  | °C    |

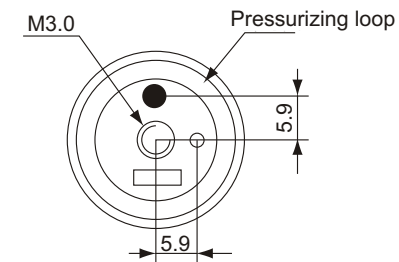
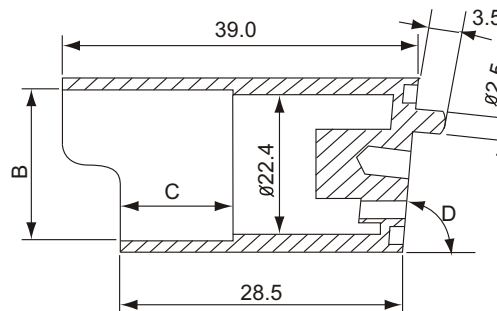
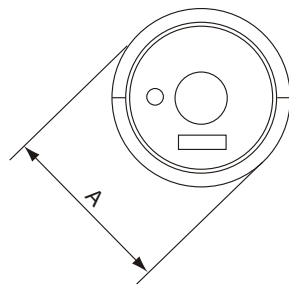


## NFCL-R26xUY10 Single Color Outdoor Lamp Cluster

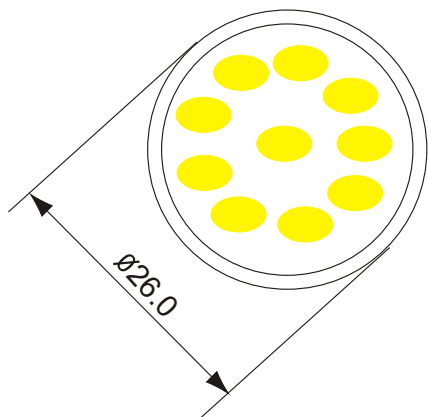
### PACKAGE DIMENSION

NFCL-R26x Series

| SPEC. | A                                  | B    | C    | D   |
|-------|------------------------------------|------|------|-----|
| R26A  | 26 <sup>+0.0</sup> <sub>-0.1</sub> | 23.8 | 7.5  | 80° |
| R26B  | 26 <sup>+0.0</sup> <sub>-0.1</sub> | 23.8 | 9.5  | 80° |
| R26C  | 26 <sup>+0.0</sup> <sub>-0.1</sub> | 23.8 | 14.5 | 80° |

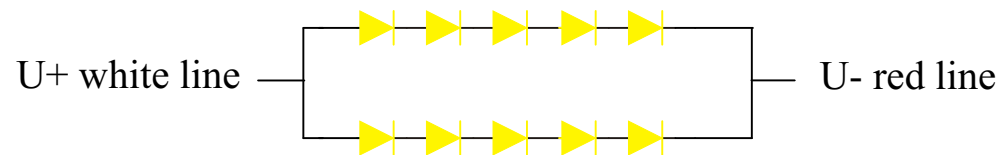


### INTERNAL CIRCUIT DIAGRAM



 **Yellow**

Common Anode



 **Yellow**

Tolerance  $\pm 0.25\text{mm}$  unless stated