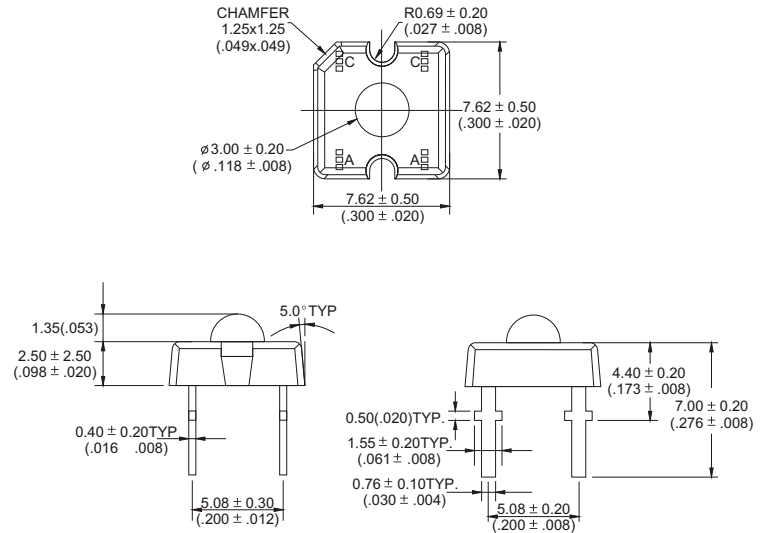




● Features:

- 1. Chip material: InGaN/SiC
- 2. Emitting color: Ultra White
- 3. Lens Appearance: Water Clear
- 4. Long life-solid state reliability
- 5. High luminance output
- 6. Design for high current operation
- 7. RoHS compliant

● Package dimensions



Notes:

- 1. All dimensions are in millimeters (inches).
- 2. Tolerance is ±0.25mm (0.01") unless otherwise specified.
- 3. An epoxy meniscus may extend about 1.0mm down to the lead.
- 4. Specifications are subject to change without notice.



● Absolute maximum ratings (Ta=25°C)

Characteristic	Test Condition	Symbol	UW	Units
Pulse Forward Current	1/10 duty cycle 0.1ms Pulse width	I _{FP}	100	mA
DC Forward Current		I _F	50	mA
Reverse Current	V _R =5V	I _R	10	μA
Power Dissipation		P _D	210	mW
Operating Temperature		T _{OPR}	-40 to +80	°C
Storage Temperature		T _{STG}	-40 to +85	°C
Lead Soldering Temperature	1.60mm from body maximum 3 seconds	T _{SOL}	260	°C



● Electrical And Optical Characteristics(Ta=25°C)

Parameter	Test Condition	Symbol	Min.	Typ.	Max.	Units
Forward Voltage	IF=20mA	V _F	---	3.30	3.80	V
Reverse Current	V _R =5V	I _R	---	---	10	mA
Chromaticity Coordinates	IF=20mA	X	---	0.30	---	nm
		Y	---	0.29	---	nm
Spectral Line Half-width	IF=20mA	Δλ	---	---	---	nm
Luminous Intensity	IF=20mA	I _V	---	1500	---	mcg
Viewing Angle	IF=20mA	2θ½	---	80	---	deg.

● Typical electro-optical characteristics curves

